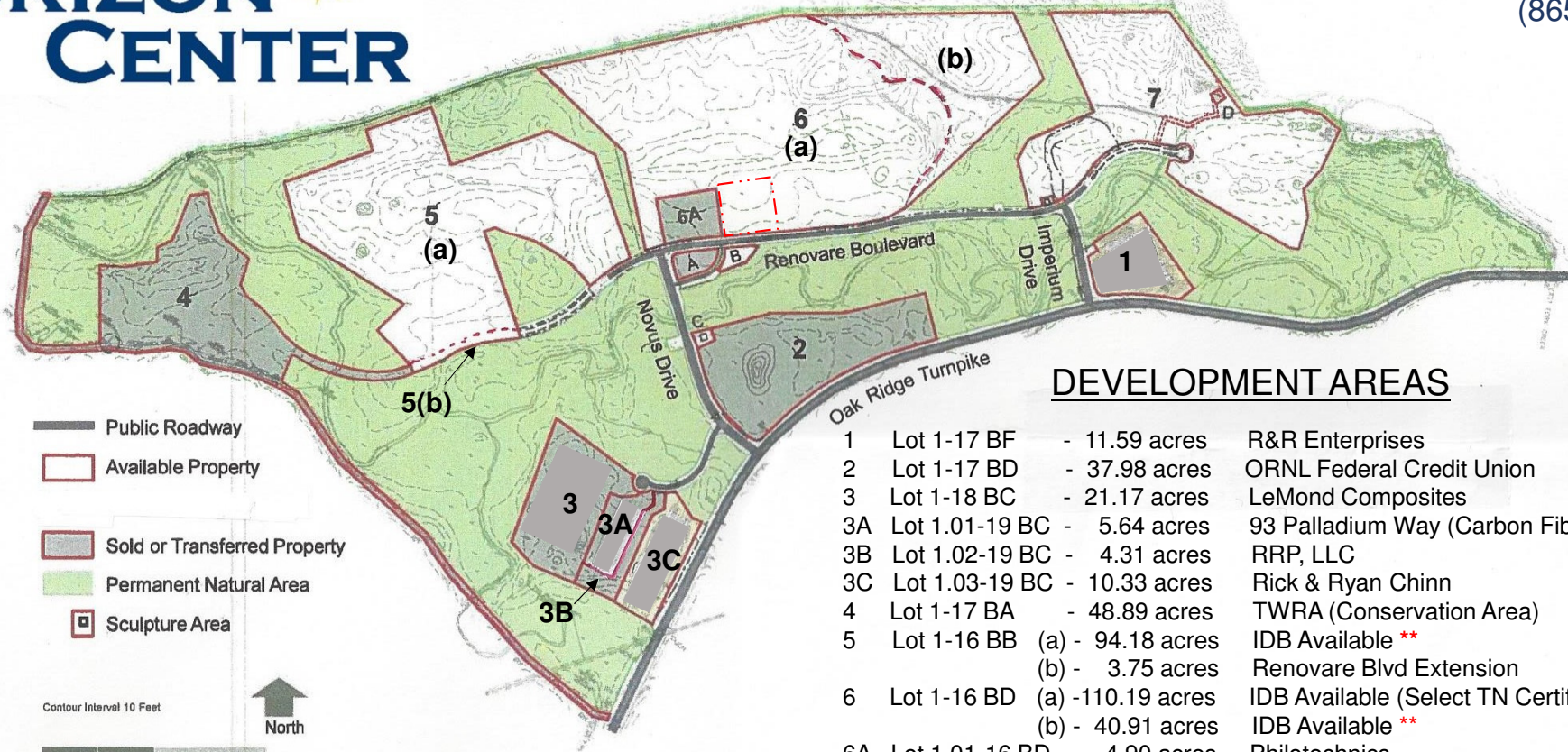


****PENDING- AREAS 5, 6, & 7
OFF MARKET- 90 DAYS EFF. 8/4/2021**



DEVELOPMENT AREAS

1	Lot 1-17 BF	- 11.59 acres	R&R Enterprises
2	Lot 1-17 BD	- 37.98 acres	ORNL Federal Credit Union
3	Lot 1-18 BC	- 21.17 acres	LeMond Composites
3A	Lot 1.01-19 BC	- 5.64 acres	93 Palladium Way (Carbon Fiber Bldg)
3B	Lot 1.02-19 BC	- 4.31 acres	RRP, LLC
3C	Lot 1.03-19 BC	- 10.33 acres	Rick & Ryan Chinn
4	Lot 1-17 BA	- 48.89 acres	TWRA (Conservation Area)
5	Lot 1-16 BB (a)	- 94.18 acres	IDB Available **
	(b)	- 3.75 acres	Renovare Blvd Extension
6	Lot 1-16 BD (a)	-110.19 acres	IDB Available (Select TN Certified Site) **
	(b)	- 40.91 acres	IDB Available **
6A	Lot 1.01-16 BD	- 4.90 acres	Philotechnics
7	Lot 1-15 BF	- 73.59 acres	IDB Available **
A	Lot 2-16 BD	- 2.12 acres	CROET
B	Lot 3-16 BD	- 1.68 acres	IDB Available
C	Lot 2-17 BD	- 1.55 acres	IDB (Sculpture Area)
D	Lot 1.01-15 BF	- .90 acres	CROET (Cell Tower and Utility Easement)
Total Acres		473.68	

Contour Interval 10 Feet

0 1,000 2,000 Feet

CHAZMELL

Revision Date 16 March 2011